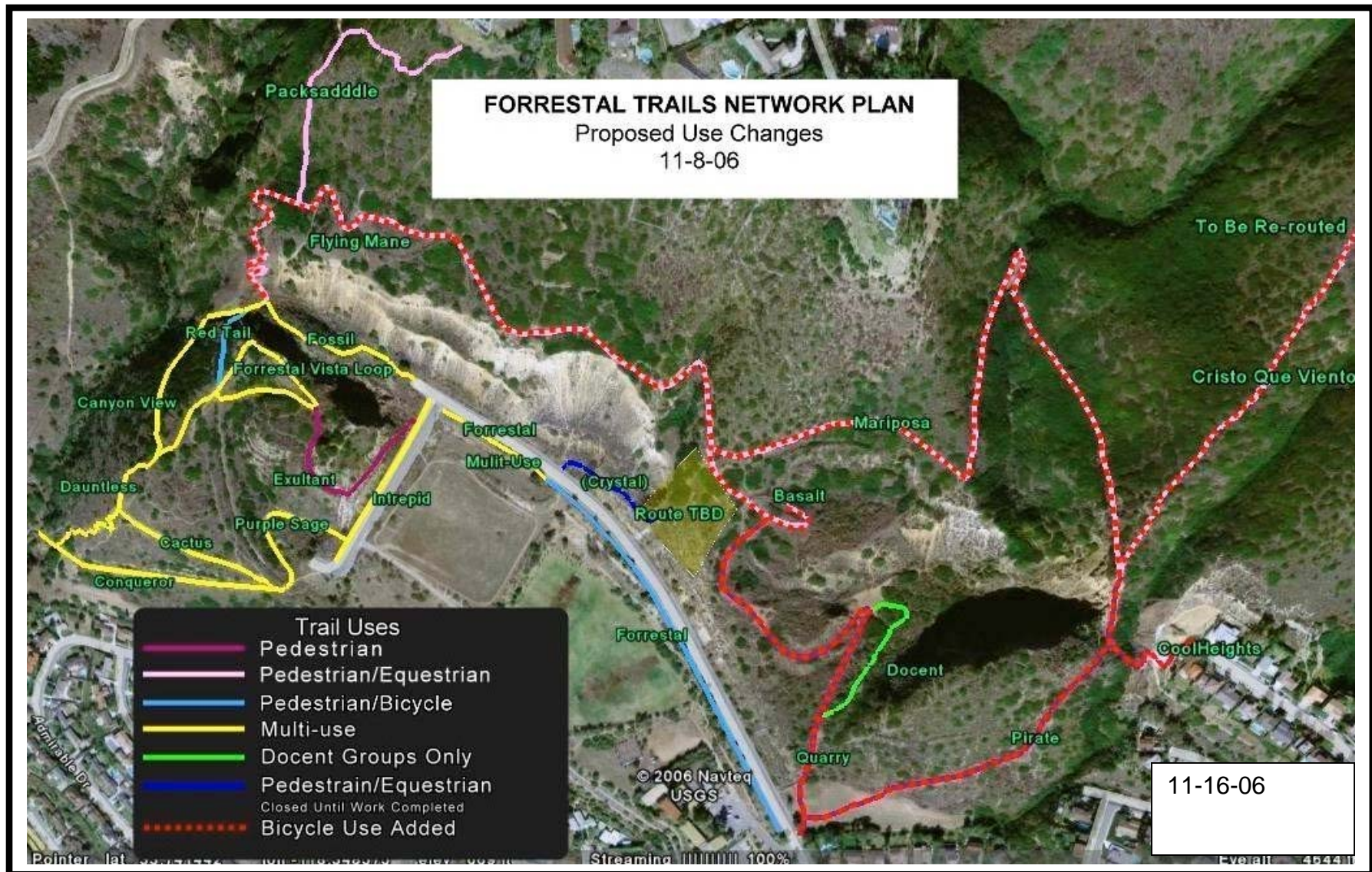


# PROPOSED REVISIONS TO THE TRAILS NETWORK PLAN

The Forrestal Advisory Board is proposing the following revisions to the Trails Network Plan:

1. Add bicycle use to these trail segments: Flying Mane (A14), Mariposa (A15), Cristo Que Viento (A16), Pirate (L1), Coolheights (L2), Quarry (L3) and Basalt (L4).
2. Realign a specific section of the Canyon View Trail (A13) at the Flying Mane (A14) junction (see detailed map on the following page).



# CANYON VIEW TRAIL (A13)

The Forrestral Advisory Board is proposing to realign a specific section of the Canyon View trail at the Flying Mane (A14) junction to address erosion and vegetation issues associated with the current route. The proposed change to the existing route is depicted in the illustration below. The red line depicts the proposed route and the blue dashed line depicts the proposed route to be closed.

