

Canyons Reserve Bicyclist Trail Recommendations



Prepared By
Concerned Off-Road Bicyclist Association of Palos Verdes

October 3, 2007

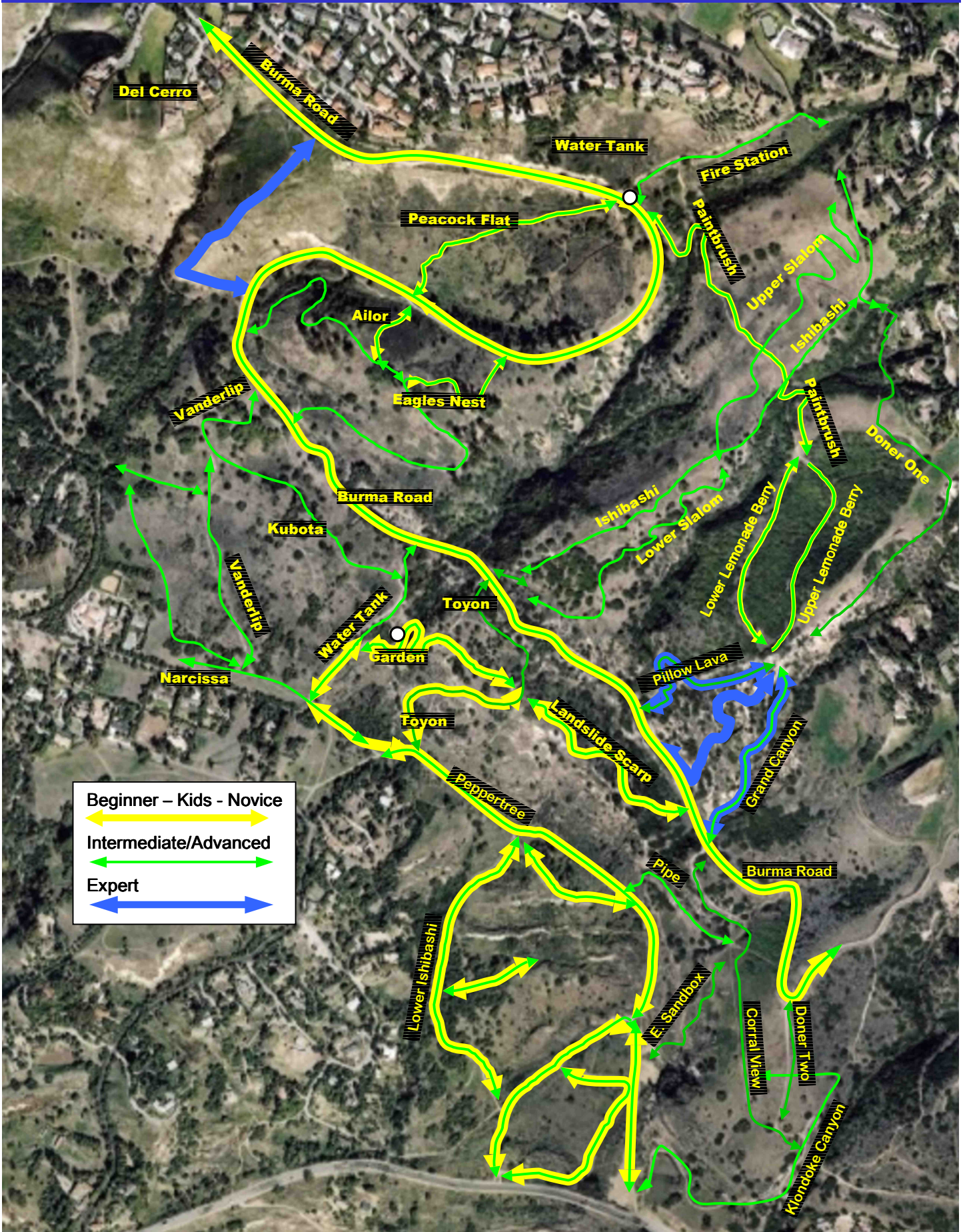
Underlying Considerations for CORBA PV's Trail Use Suggestions

- RPV open space belongs to everyone.
- Default designation should remain multi-use until the management plan has gathered sufficient data to judge otherwise.
- However, we respect the concept of a few special-purpose trails and submit this proposal in the spirit of cooperation.
- Proportion of equestrian trails should be weighed against the more than 50 miles of non-bike trails on the peninsula.
- Provide diverse trail experiences from easy to challenging.
- Maintaining bike access to popular trails will reduce enforcement burden and encourage cooperation.

Underlying Considerations for Additional Trail Recommendations

- Good trail design prevents user conflict. Adding trails in the congested Del Cerro area will spread users out.
- One trail is recommended to entice more skilled riders away from the trail head area, as well as providing a trail that interests them. This strategy will satisfy these riders and undoubtedly increase their support of the management plan.
- Two addition trails for equestrians provide them with several loop options while preserving multi-use on popular bike routes.

Bike Routes by Skill Level



Additional Restored Trails

